



CSC1832 FRAME ONLY

CSC Building Systems introduces the Weekender Series. Developed as a place to escape “city” life, where one can get back to nature and the simple ways of life. The CSC Building Systems **Weekender Series** is an engineered steel framing system specifically designed for the recreational market. The economical lightweight steel frames are easily transported and can be put up quickly by two or three workers without any special lifting equipment. This makes it the perfect framing package for the advanced Do-It-Yourselfer.

When the stress of today’s hectic lifestyle gets to be too much, wouldn’t it be nice to escape to your weekend retreat and cultivate your true perspective on life. Whether you are looking for an empty nest, starter or vacation home this may be just what you are looking for.

CSC Building Systems has re-designed the Weekender Series, making it more flexible, easier to build, and less expensive. **The NEW “Rigid Frame” design does not depend on any interior bearing walls, therefore providing a blank slate for interior floor plans. Walls may be of any type and material you would like to use and may be arranged according to your design. They may be moved or changed at any time without affecting the structural integrity of the cabin. Interior walls may be built with steel studs (optional CSC item), wood studs, or panels of your design.**

This Cabin Kit Includes a complete steel frame, to complete the CSC1832 cabin FRAME ONLY. The deck, stairs, and railing materials are **not included**.

THIS KIT IS BUILT ON A CONCRETE SLAB, FIRST FLOOR FRAMING (OPTIONAL CSC ITEM) IS NOT INCLUDED.

What is INCLUDED with this Kit?

1. Complete Galvanized Steel frame for the roof, walls, and second floor
2. Galvanized Steel door frames and window frames as per this plan. (field cutting required)
3. Structural Bolts. Braces, and screws required for assembly
4. Plans for assembly (3 copies)
5. Engineers Stamp on the frame design and foundation design
6. Everything to build the CSC1832; as a frame ready for OSB or other wood covering, EXCEPT the actual windows and doors, exterior OSB, siding, shingles, and slab or foundation.

What is NOT INCLUDED with this Kit?

1. Anything and everything not listed as included; which includes but is NOT limited to:
 - a. OSB wood sheathing, siding, and shingles
 - b. Interior wall framing
 - c. Deck materials
 - d. Flooring for the second floor (frame is included)
 - e. Drywall, paneling and/or all other finishing material
 - f. Plumbing, electrical, doors, windows, insulation, etc.

This cabin frame may have the exterior sheeted with OSB or plywood since the steel frame support members are on 24” centers. In this case standard roofing materials and wood siding materials and trim may be used, producing an exterior similar to the artist’s rendering in the brochure.

**Construction Package for Cold Formed Steel Building
Created for Cabin 1832 Frame Only
Job Number CSUN 61870856**



Table Of Contents

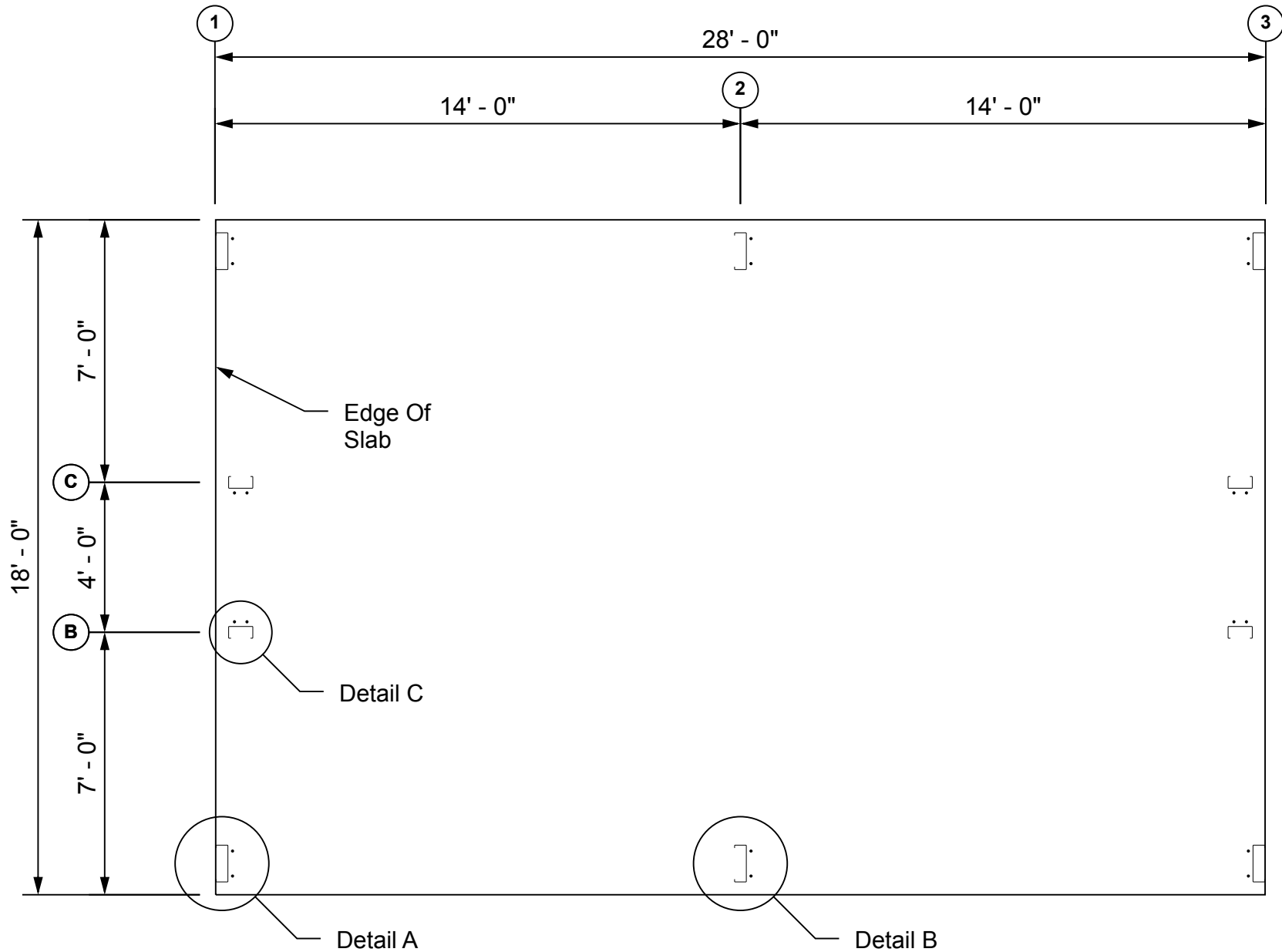
Building Layout Plan	2
Anchor Bolt Details	3
Portal Frame Sections	4
Roof Framing Plan	7
Girt Layout	8
Sheeting Layout	12

Construction Package Notes

This construction package is to be used in conjunction with the created order for the job. All lengths and piece marks of materials in this package will correspond to an item in the order. For example, on the Sidewall A girt layout, there will likely be an item with a piece mark of SGA1. This will correspond to a line item in the order with the piece mark of SGA1. Products that do not include a piece mark will be marked with the product code.

All girt layout and sheeting layouts drawings in this construction package are exterior views, and in these illustrations, components are drawn as if viewed from the outside of the building.

All drawings in this construction package are for reference only, and are to be used to supplement the engineering drawings. If any discrepancies occur, the engineering plans will always take precedence.

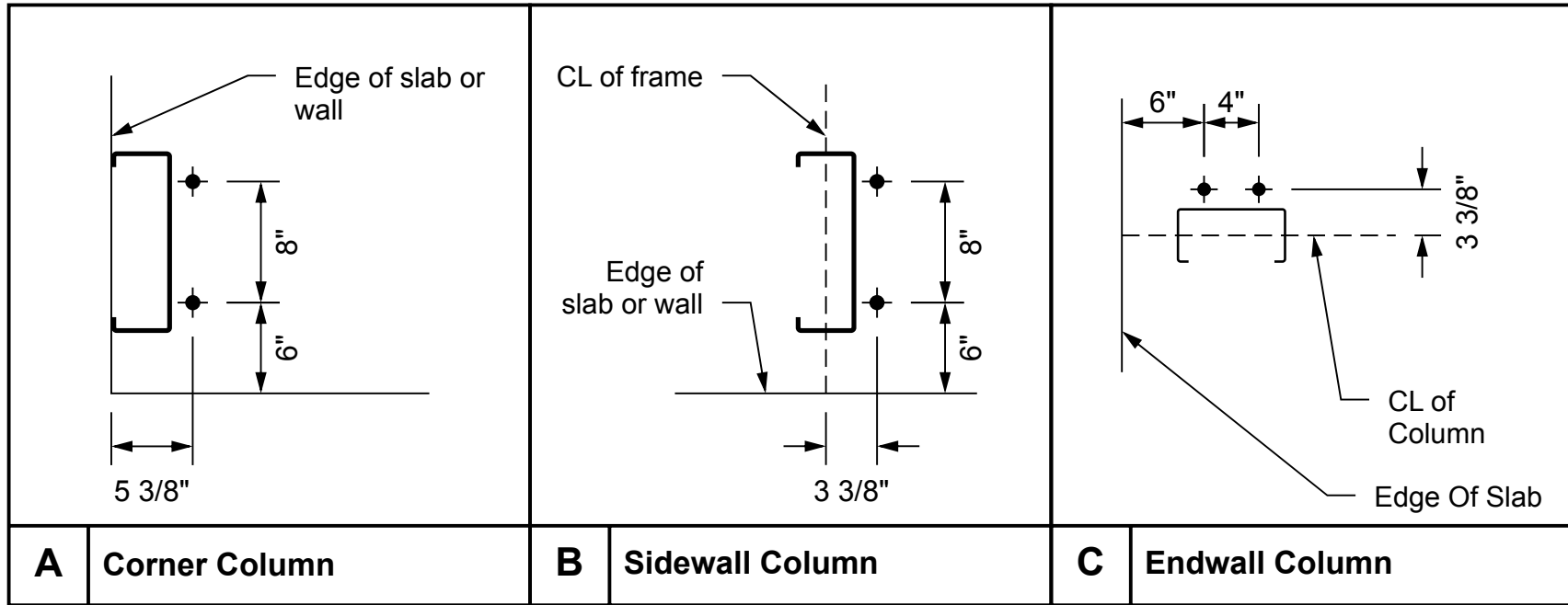


This illustration is for reference only, and is to be used to supplement the engineering drawings. If any discrepancies occur, the engineering plans will always take precedence.



Building Layout Plan



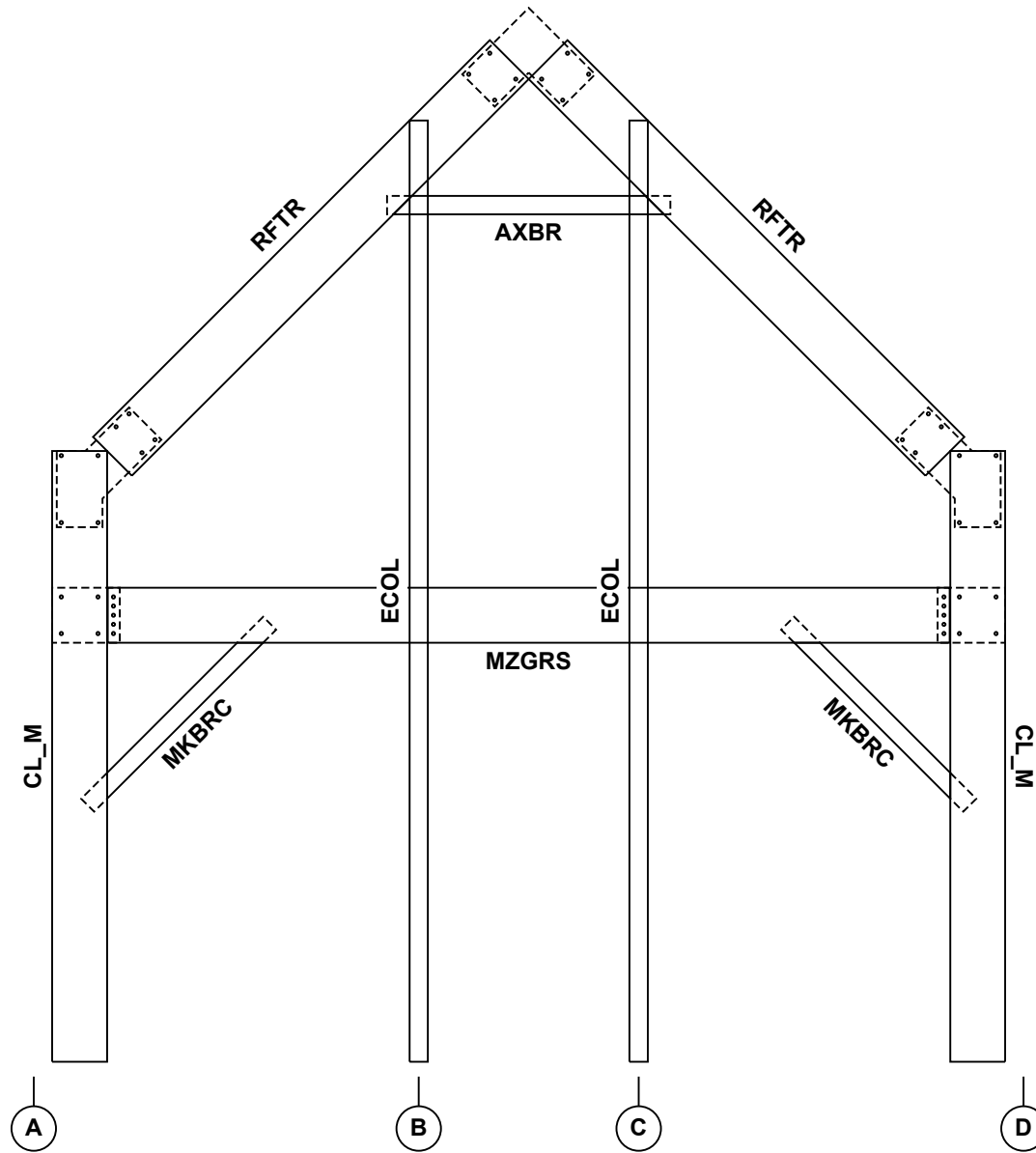


This illustration is for reference only, and is to be used to supplement the engineering drawings. If any discrepancies occur, the engineering plans will always take precedence.



Anchor Bolt Details



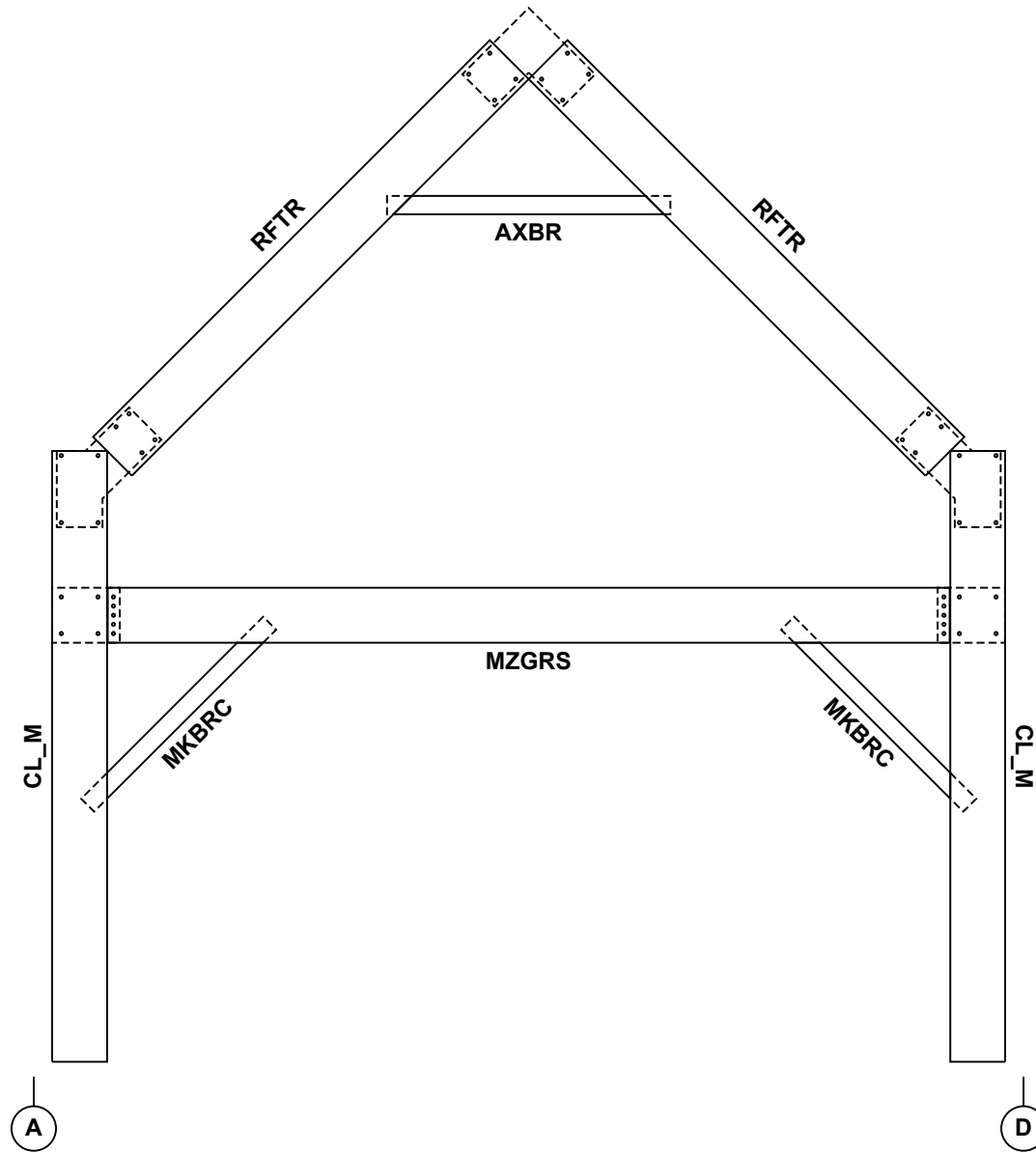


This illustration is for reference only, and is to be used to supplement the engineering drawings. If any discrepancies occur, the engineering plans will always take precedence.



Portal Section, Frame Line 1



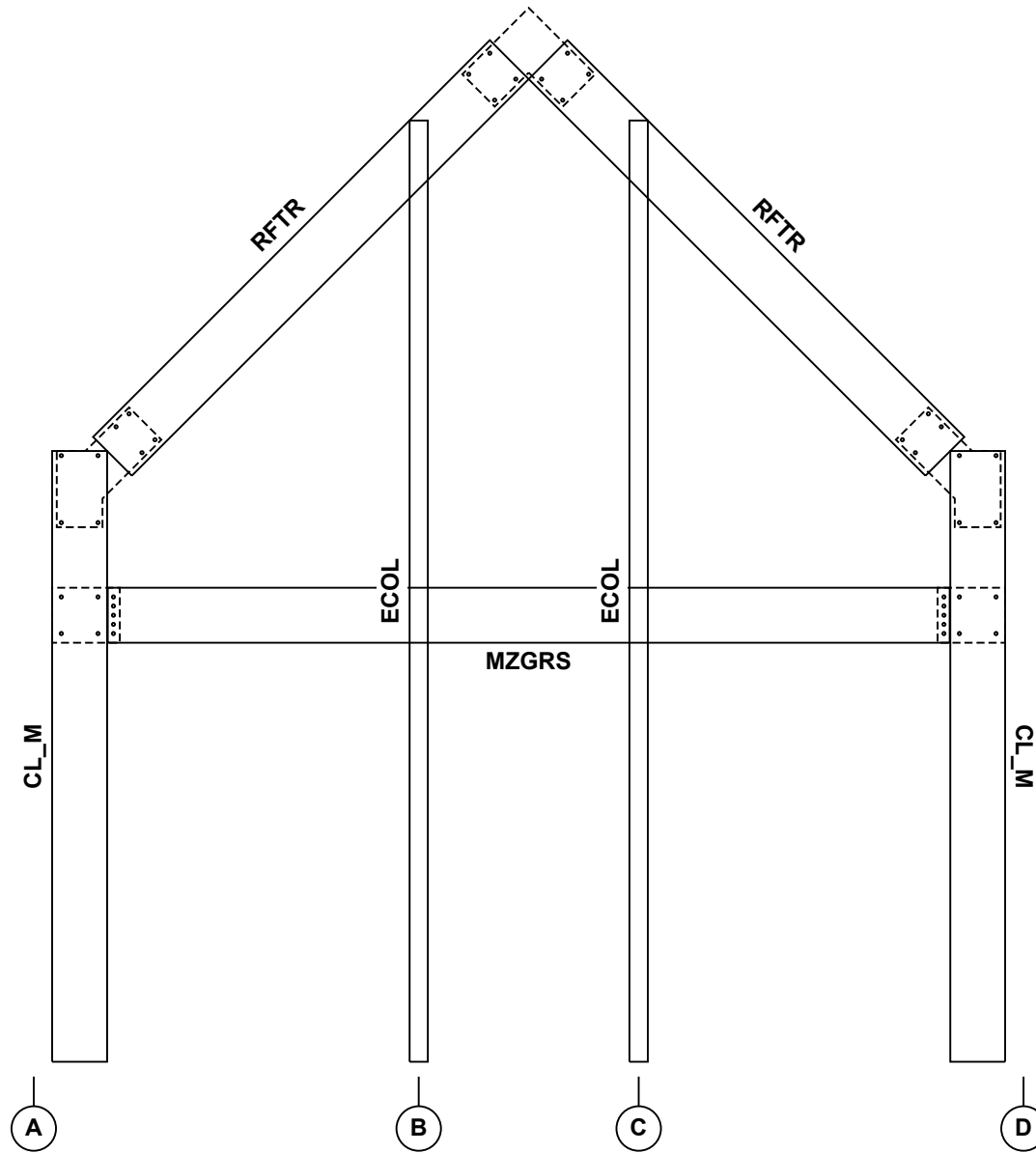


This illustration is for reference only, and is to be used to supplement the engineering drawings. If any discrepancies occur, the engineering plans will always take precedence.



Portal Section, Frame Line 2



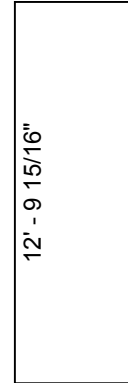
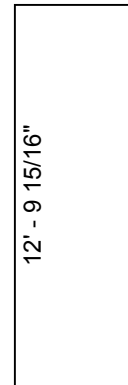
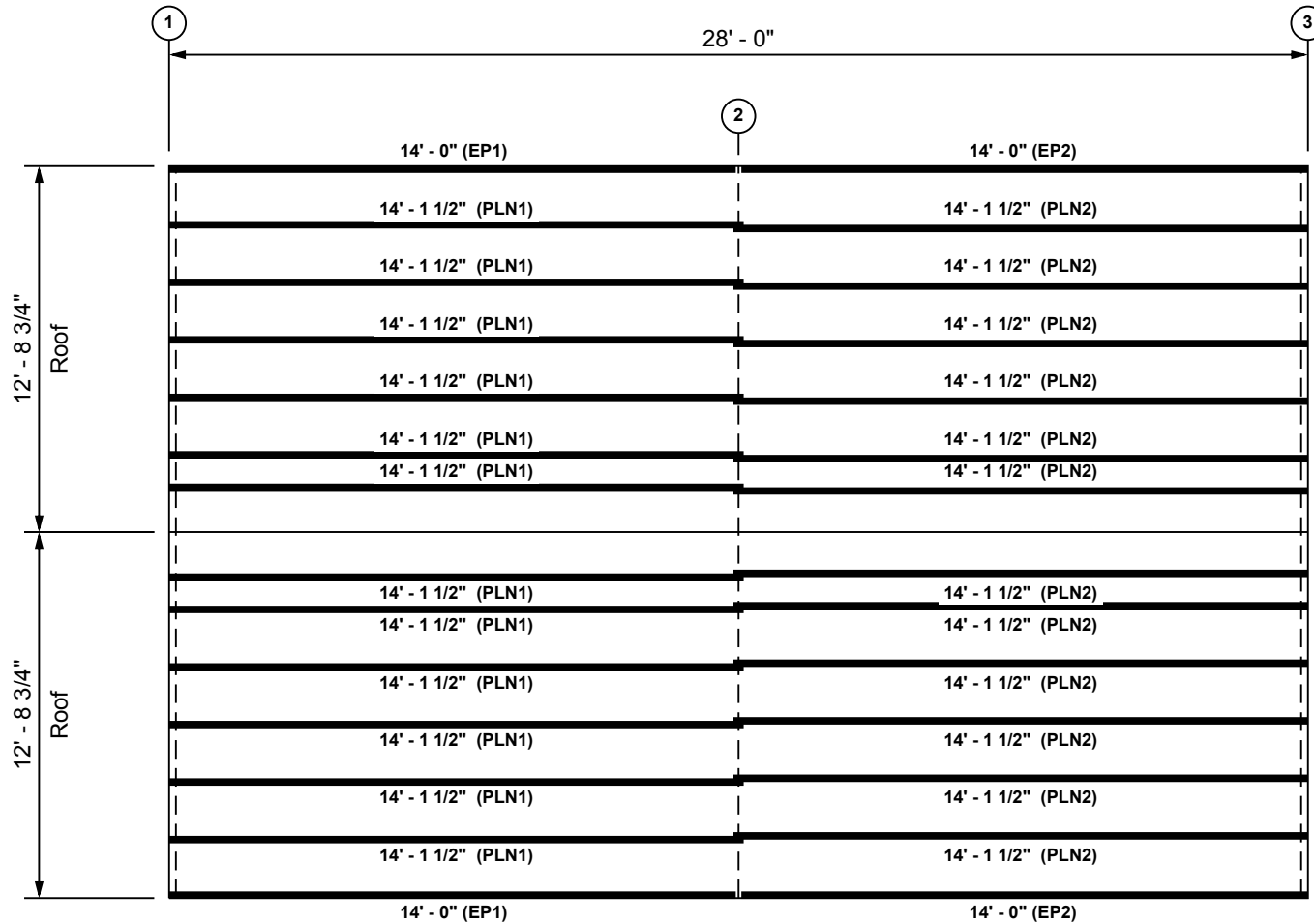


This illustration is for reference only, and is to be used to supplement the engineering drawings. If any discrepancies occur, the engineering plans will always take precedence.



Portal Section, Frame Line 3





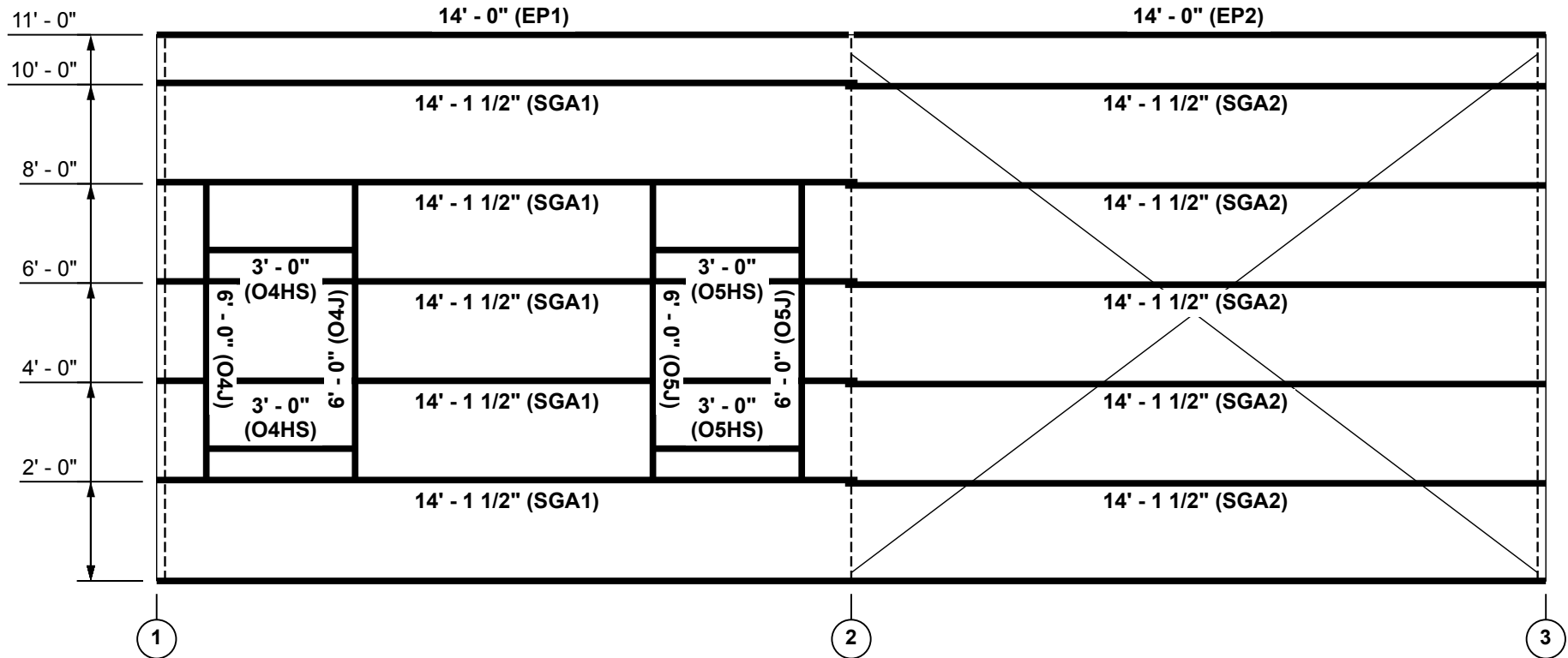
Roof Sheeting:
Tuff Rib 29G
Chocolate Brown

This illustration is for reference only, and is to be used to supplement the engineering drawings. If any discrepancies occur, the engineering plans will always take precedence.



Roof Framing Plan



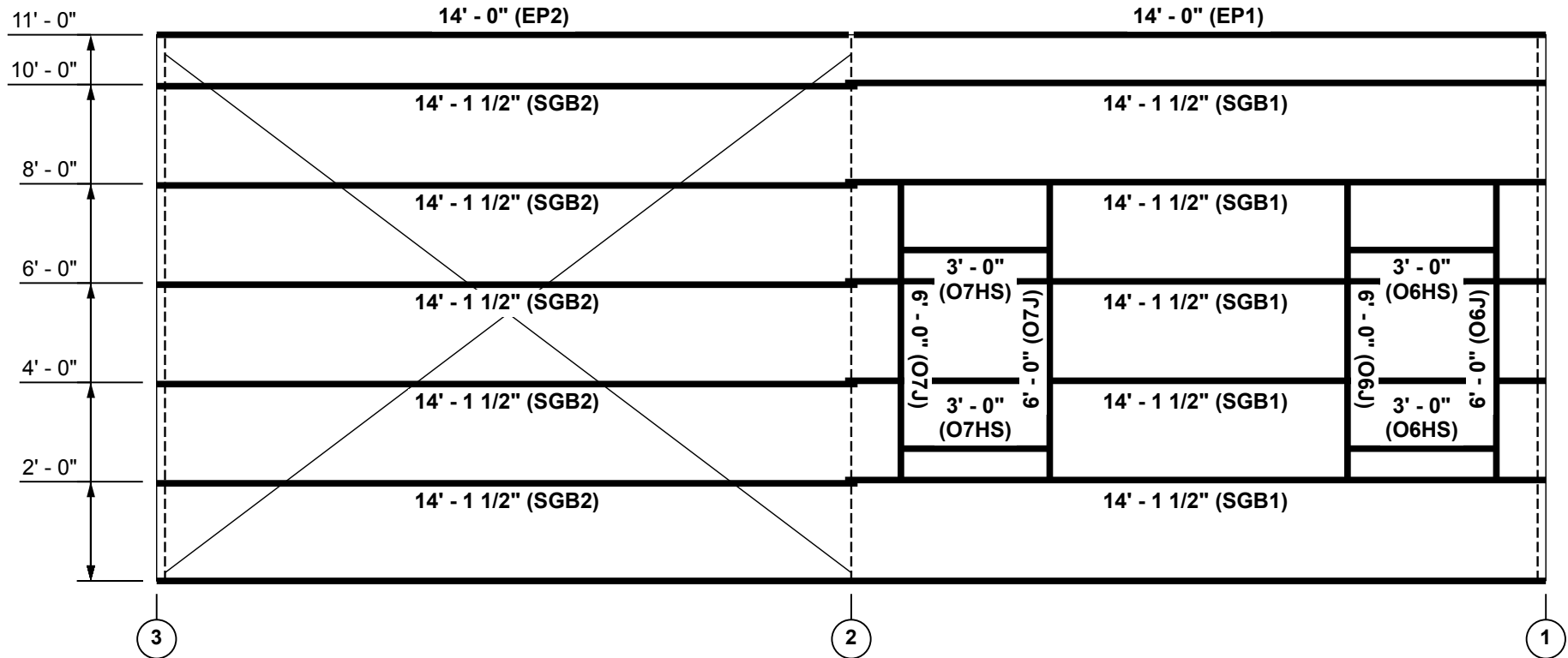


This illustration is for reference only, and is to be used to supplement the engineering drawings. If any discrepancies occur, the engineering plans will always take precedence.



Sidewall A Girt Layout, Frame Line A



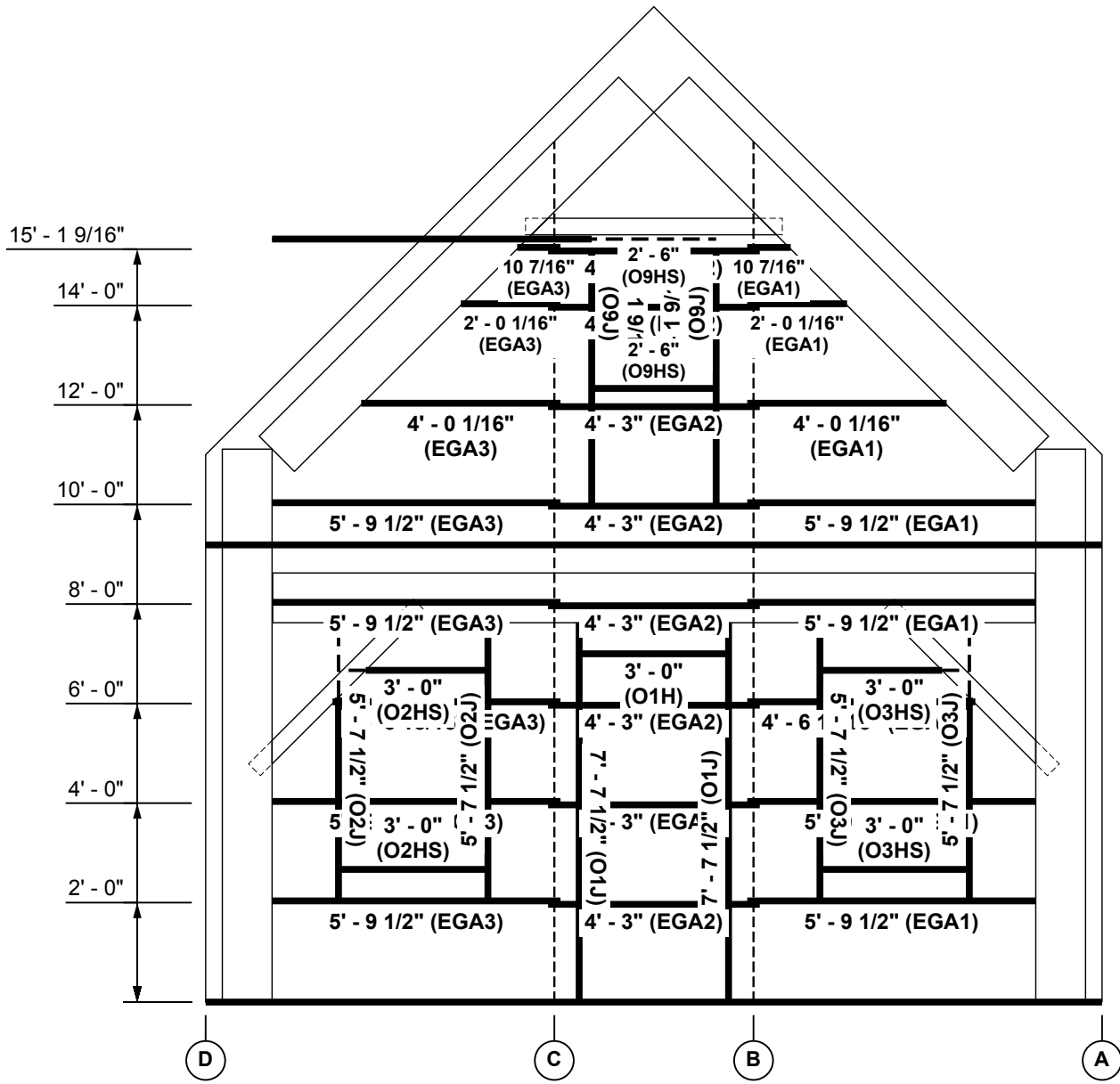


This illustration is for reference only, and is to be used to supplement the engineering drawings. If any discrepancies occur, the engineering plans will always take precedence.



Sidewall B Girt Layout, Frame Line D



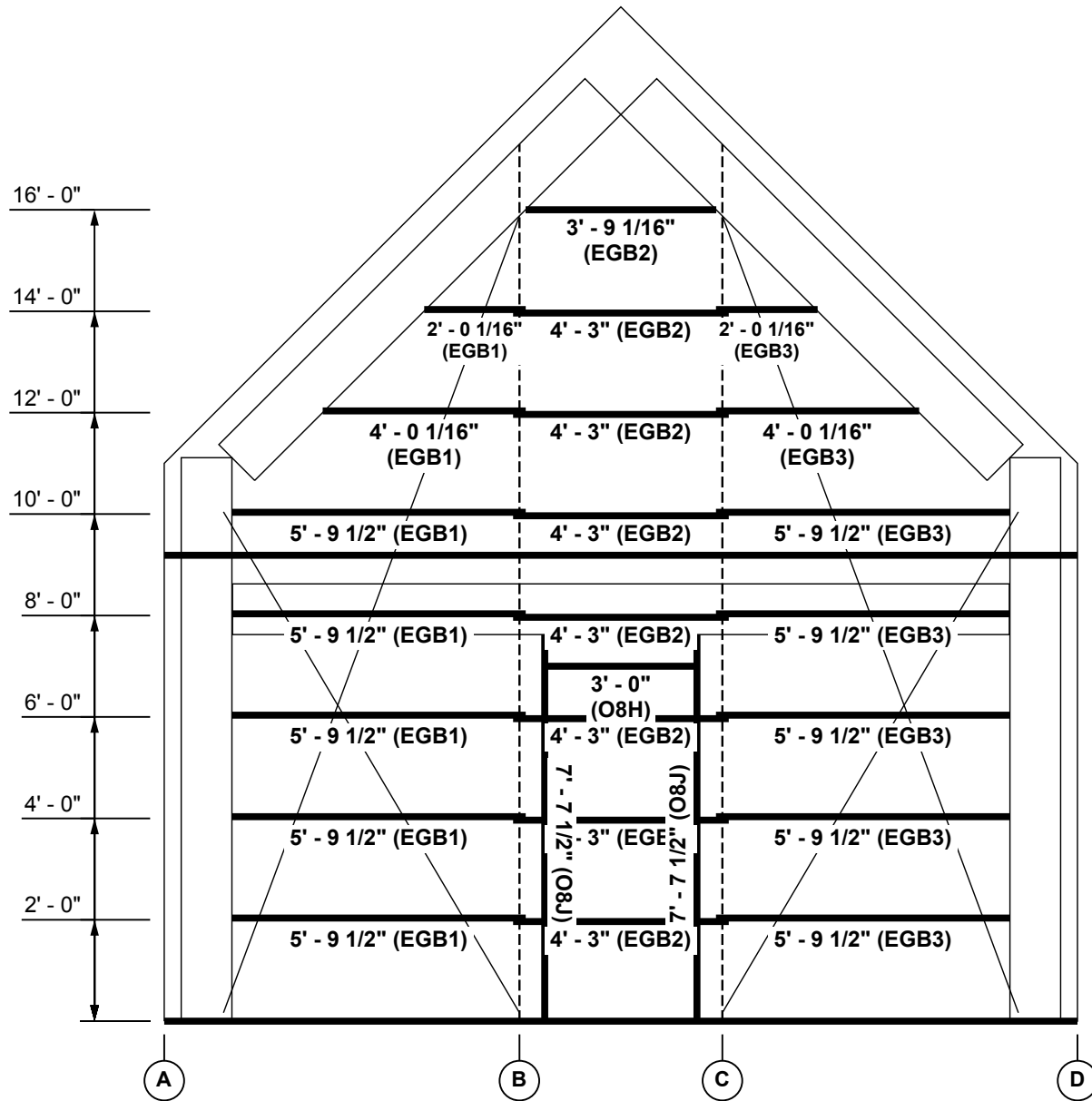


This illustration is for reference only, and is to be used to supplement the engineering drawings. If any discrepancies occur, the engineering plans will always take precedence.



Endwall A Girt Layout, Frame Line 1



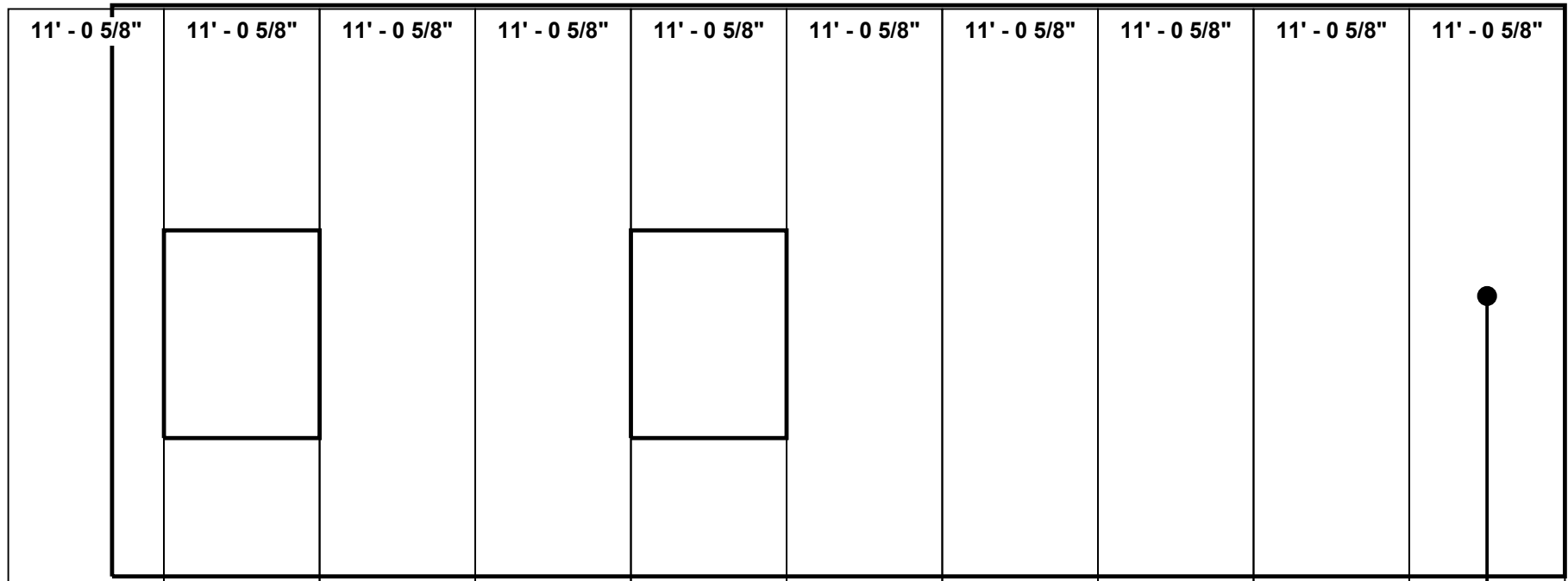


This illustration is for reference only, and is to be used to supplement the engineering drawings. If any discrepancies occur, the engineering plans will always take precedence.



Endwall B Girt Layout, Frame Line 3





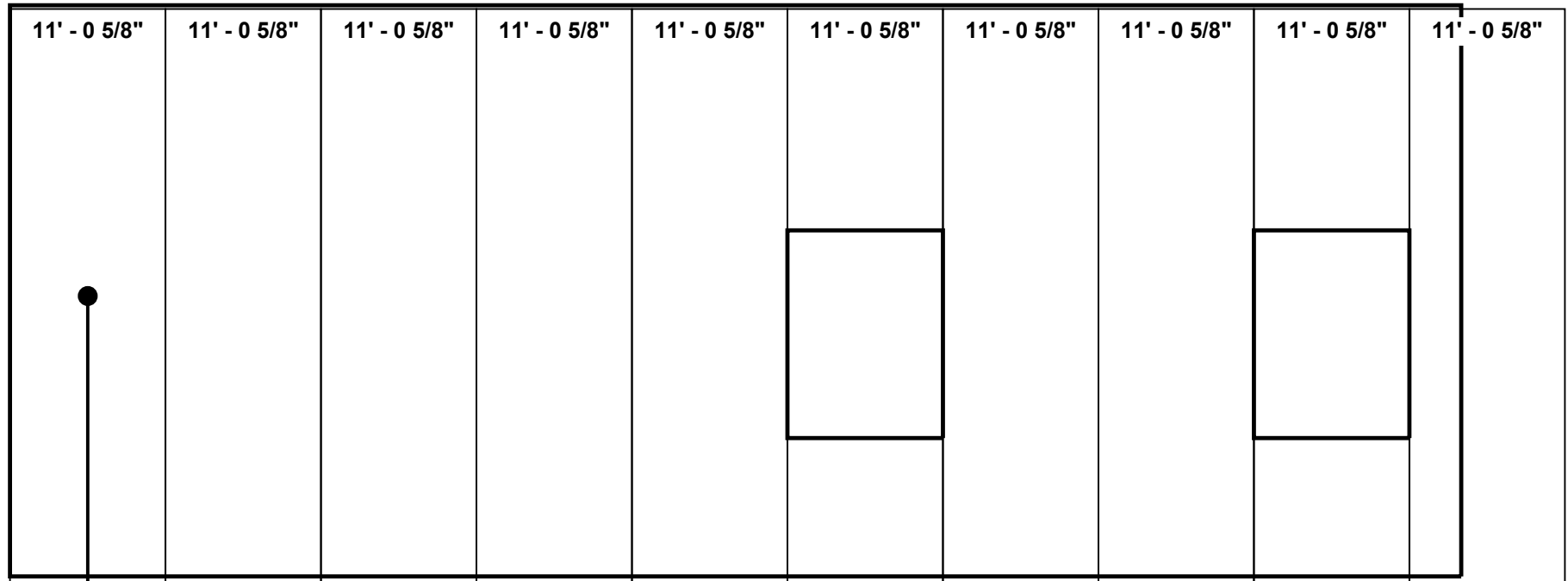
←
**Sheeting starts with this sheet
 and moves across the wall**

This illustration is for reference only, and is to be used to supplement the engineering drawings. If any discrepancies occur, the engineering plans will always take precedence.



Sidewall A Sheeting Layout, Frame Line A





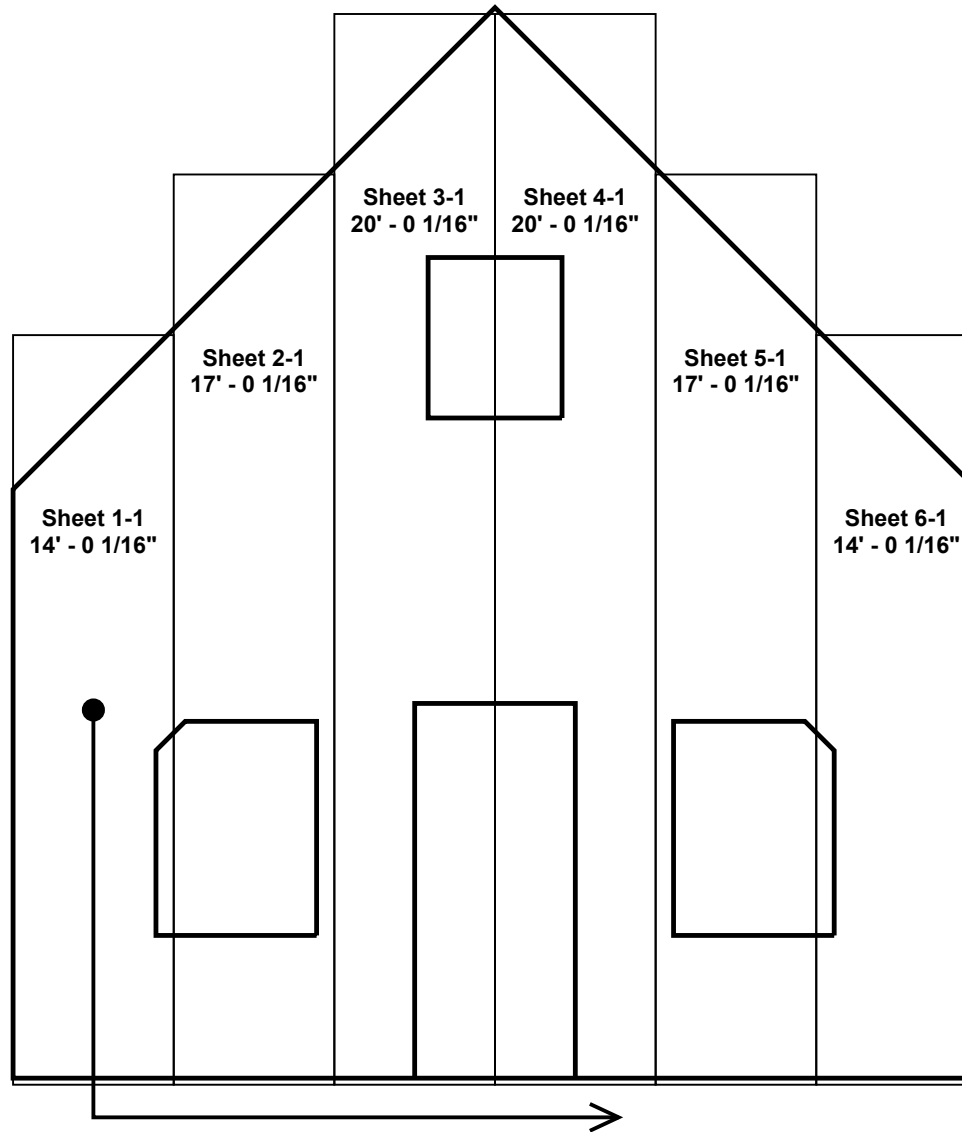
Sheeting starts with this sheet
and moves across the wall

This illustration is for reference only, and is to be used to supplement the engineering drawings. If any discrepancies occur, the engineering plans will always take precedence.



Sidewall B Sheeting Layout, Frame Line D





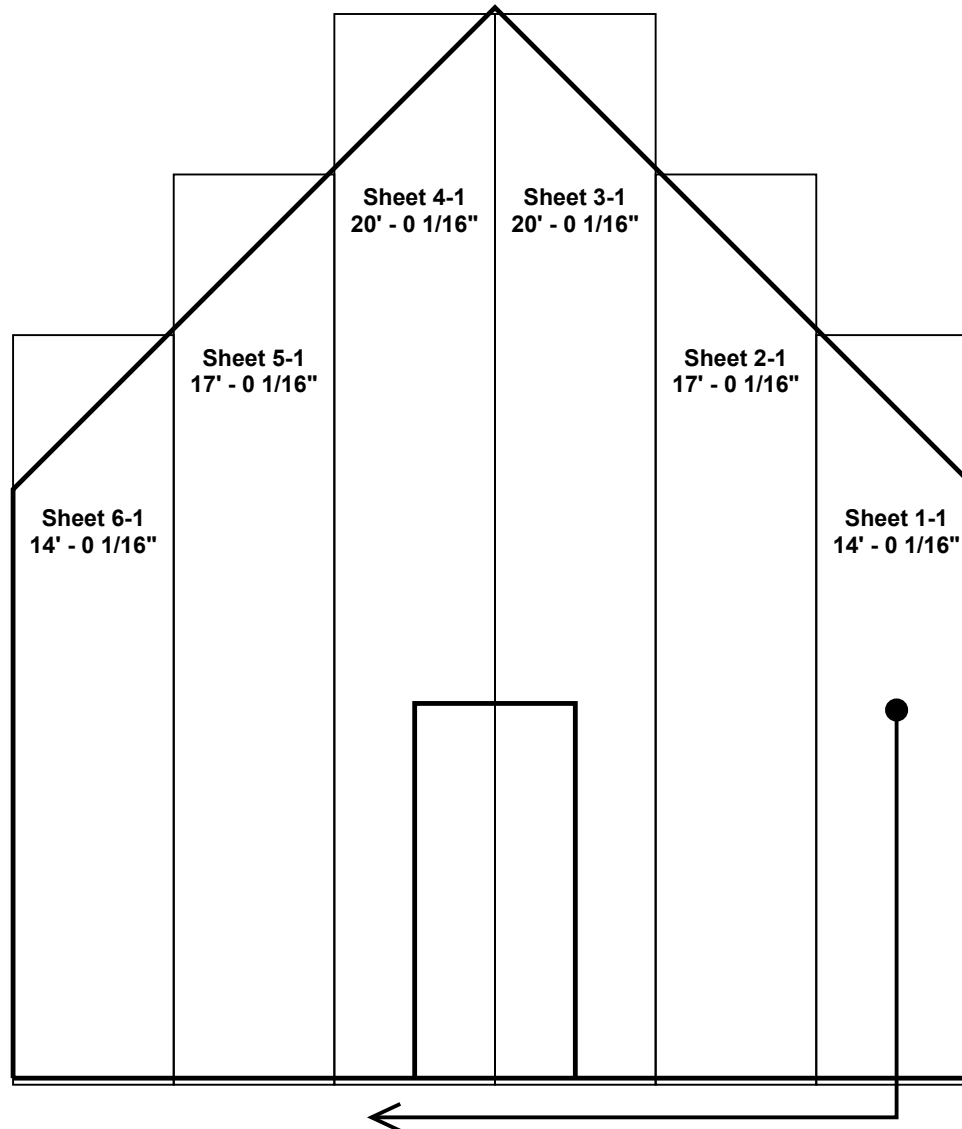
Sheeting starts with this sheet
and moves across the wall

This illustration is for reference only, and is to be used to supplement the engineering drawings. If any discrepancies occur, the engineering plans will always take precedence.



Endwall A Sheeting Layout, Frame Line 1





←
**Sheeting starts with this sheet
 and moves across the wall**

This illustration is for reference only, and is to be used to supplement the engineering drawings. If any discrepancies occur, the engineering plans will always take precedence.



Endwall B Sheeting Layout, Frame Line 3

